



## The price winning fiberglass Silver Z series extends with a fifth model.

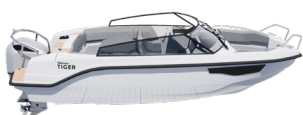
Silver fiberglass series extends with a second bow rider, Puma BR. This almost six meters long premium boat will be the smallest in size of the Silver Z series. Boat's design will follow Puma's price winning big brother Tiger DC's appearance. Tiger DC has won the European powerboat of the year and Best of boats awards.

Despite the compact size, Puma has the comfort of a much bigger boat. Puma fits up to seven adults, boat is stable, driving feeling is smooth and precise. Both driver and co-driver travel comfortably in fully padded seats. While on the dock, the seats can be turned around and forming a convenient seating area together with aft sofa and a table that can be bought as an accessory. The boat can also be equipped with a stern canopy, which enables pleasant travelling even on a rainy day. Inside the aft sofa is possible to install a fridge that can be bought as an accessory. With the fridge food and drinks stay nice and cold through hot summer days.

Storage compartment inside the sofa is big enough for a wakeboard or water skis and seats in the open bow you can store grocery bags during transportation. Co-driver's console has a storage compartment that fits even navigational charts. Both aft and bow have storage compartments for ropes and anchor. As does all the Silver Z range boats, so does Puma have separate decked storage compartments for fenders. The fender boxes are located in the back corners, which is often an untapped part on boats.

### SILVER PUMA BR

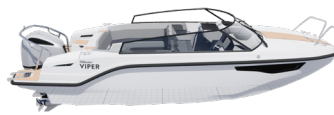
Length .....	5,85 m
Width .....	2,16 m
Weight .....	approx. 750 kg
Engine.....	80-115 hp



**TIGER BR<sup>2</sup>**



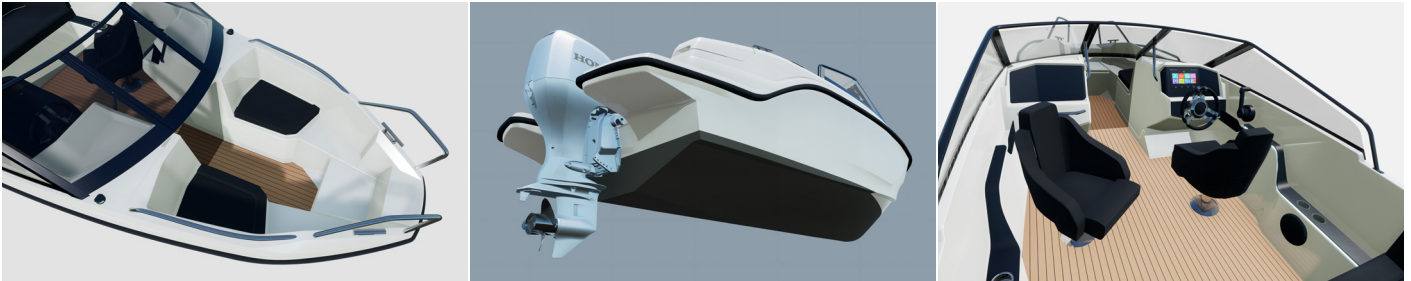
**TIGER DC<sup>2</sup>**



**VIPER DC<sup>2</sup>**



**RAPTOR DC<sup>2</sup>**



Puma has windshield made from glass that continues far along the sides giving shield even for the passengers sitting on the aft sofa. The windshield provides excellent viewability for the driver in every weather condition. Framing the windshield there is a stylish and sturdy handrail. When designing the driver's console, focus was on functionality, ergonomics and looks. All gauge and switches are located well in driver's eyesight without blocking visibility. Driving is equally convenient standing or sitting. Between the consoles there is a door giving shield for passengers in the aft. Acid proof bow railings come as standard making travelling and getting to the shore safe and pleasant. Puma's swimming platforms are roomy, which makes mooring and getting in the water easier. Also, the swimming ladder come as standard making water activities natural part of boat trips. Puma is the perfect choice for day trips and watersports as well as a boat at summer house.

**The compact bow rider  
has everything you could  
wish for on a day trip.**

The boat can be equipped with an engine from 80 to 115 horsepower. Hull's excellent bilge ensure stable rides and keep passengers dry.

The compact bow rider has everything you could wish for on a day trip. If the boat's comprehensive standard equipment does not have everything you desire, Puma can also be equipped with a wide range of accessorize.

The boat will be launched virtually in February.

**silverboats.fi**

---

**For more information:**

Olli Heinonen  
Oy Brandt Ab  
olli.heinonen@brandt.fi  
+358 40 510 3500